



Developer :

Web Site : www.virasatdevelopers.com
Mail Id : virasatbuildcon162@gmail.com

Site Add. :

PALM GLORY II, Nr. Takshashila greens,
B/h. Aarya Grand Resort (Fun Point Club)
Mahindra showroom lane, off. S.G. Highway,
sola, Ahmedabad-380060.

Booking Contact :

Chirag Patel : 7600030464

Pratik Patel : 9998464611

Nisarg Patel : 9638088676



Architect :

Jignesh Patel, Ahmedabad

Structure : **Amee Associates**

Jigar Shah, Ahmedabad



2 & 3 BHK Luxurious Apartments & Shops



2 & 3 BHK Luxurious Apartments & Shops

HERE,
SOMETHING IS MADE, 'YOU'
SPECIALLY FOR





HERE, SOMETHING IS MADE, 'YOU'
SPECIALLY FOR



...the grand way of living!

Palm Glory, an exclusive project located at Science City, Ahmedabad offers 2 & 3 BHK Super Luxurious Flats, Shops & Office. These Flats are designed especially for the few who are looking for something unique and contemporary for their family. It has all the elements to give you a grand lifestyle and quality living at the same address.

One aspires to live the way he dreams and at Virasat Developers we strive to convert your dreams into reality. At our new creation, we have an elegant architecture that will please your eyes and spacious flat that will take care of your comfort.



GROUND FLOOR PLAN



FIRST FLOOR PLAN

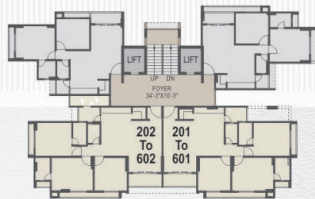


2 & 3 BHK Luxurious Apartments & Shops



3 BHK UNIT FLOOR PLAN

2 & 3 BHK Luxurious Apartments & Shops

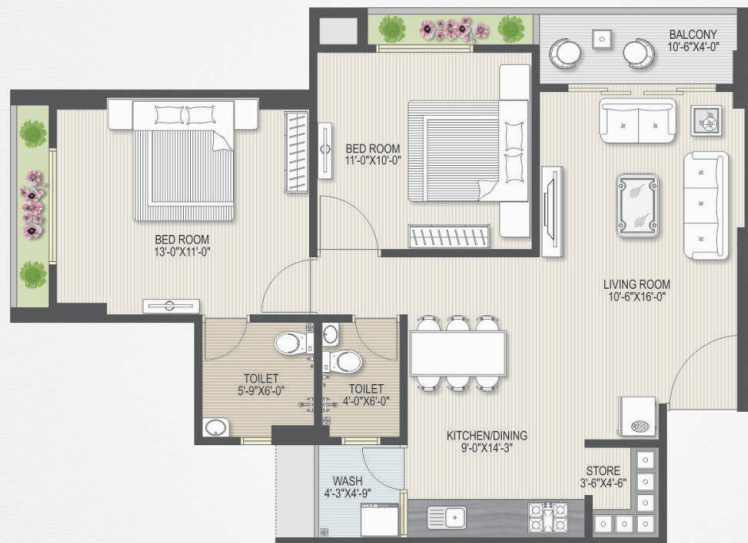


HERE,
SOMETHING IS MADE,
SPECIALLY FOR "YOU"



2 BHK UNIT FLOOR PLAN TYPE - 1

2 & 3 BHK Luxurious Apartments & Shops

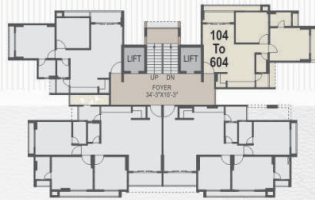


HERE,
SOMETHING IS MADE, "YOU"
SPECIALLY FOR



2 BHK UNIT FLOOR PLAN TYPE - 2

2 & 3 BHK Luxurious Apartments & Shops



HERE,
SOMETHING IS MADE, "YOU"
SPECIALLY FOR





PALM GLORY II

specifications.....

Palm Glory a home you'd be happy to come back to.
With leading malls in the vicinity, excitement is never far away.



STRUCTURE :

- Earthquake resistant structure.
- R.C.C. frame structure with brick masonry wall.



EXTERNAL & INTERNAL FINISHES

- Internal mala plaster with wall putty and external double coat sand face plaster and texture finish with 100% acrylic water proof paint.



FLOORING

- Good quality vitrified tiles in entire apartment.



BATHROOM & PLUMBING

- Glazed tiles dedo full height & flooring.
- Concealed plumbing with reputed sanitary ware & C.P. Fittings.



DOOR & WINDOWS

- Decorative main door with wooden frame, all other internal doors will be flush type with enamel paint, fully glazed powder coated aluminum section sliding windows with natural stone sill.



KITCHEN

- Platform mirror polished granite with S.S. Sink. Ceramic tile dedo up to the lintel level on the walls above platform. D.P. Kota stone Shelves in the storeroom.



ELECTRIFICATION

- 3 Phase concealed copper wiring with adequate numbers of points in all rooms. Branded modular switches. Provision for cable / telephone and internet points.



TERRACE

- Open Terrace to be finished with china mosaic for heat reflection & water proofing.



WASH AREA

- Wash area with requisite electrical & Plumbing points.
- Kota stone flooring in wash area.

The Splendid Culture of Outstanding Amenities



indoor Games



24 hour water supply



Basement Allotted Parking



CCTV Camera With Security



Attractive entrance gate and foyer

DISCLAIMER :

Any amendments in Rules & Regulation By Any Authority will be bound to all member. | All expenses of legal document, Torrent Power, Extra Stamp Duty (if any), Service tax VAT (if applicable). | Society Maintenance, AMC Tax will be Borne By Members. | External & Internal changes shall not be allowed. Before possession execution of sale deed is compulsory. | Members are bound to pay installments regularly & irregularity in payment may cause cancellation of booking. | Developer reserve right of any changes in the scheme & it shall be bound all member. | This booklet is only private circulation for general information to the member & shall not form a part of any agreement. | It can be changes without prior notice.