

Developers :



web site : [www.virasatdevelopers.com](http://www.virasatdevelopers.com)  
Mail Id : [virasatdevelopers@gmail.com](mailto:virasatdevelopers@gmail.com)

Architect :



**Jignesh Patel**

Specialist Consultant :

**Eng. Paresh (USA)**  
**Eng. Omprakash (Nairobi)**

Structure Engineer :

**Ame Associates**  
**Jigar Shah**

Site Add. :

**Palm Glory,**  
Nr. Uma Stuti, Opp. Neelgiri Flat  
B/H. Sola Bhagwat Temple,  
S.G. Highway, Sola,  
Ahmedabad-380060.

Booking Contact :

**+91 97121 37401**  
**+91 98256 28220**  
**+91 98981 92662**

[www.redbox.co.in](http://www.redbox.co.in) 90 99 500 168





**PALM GLORY**  
2 & 3 BHK Luxurious Apartments



The name " **Palm Glory** " implies " from the royal fortress meadow. "

The latest initiative **Palm Glory** too includes lush meadows with stupendous fortress - like structures and facilities, fit for the elite. The regal nature of the entire edifice though, is inspired by YOU!

You and your family will define the place - the environs, the gardens and your own abode - from what it is to what it will be. You inspire what **Palm Glory** stands for.





BREATHING LIFE IN TO YOUR DREAMS



# GROUND FLOOR LAYOUT PLAN

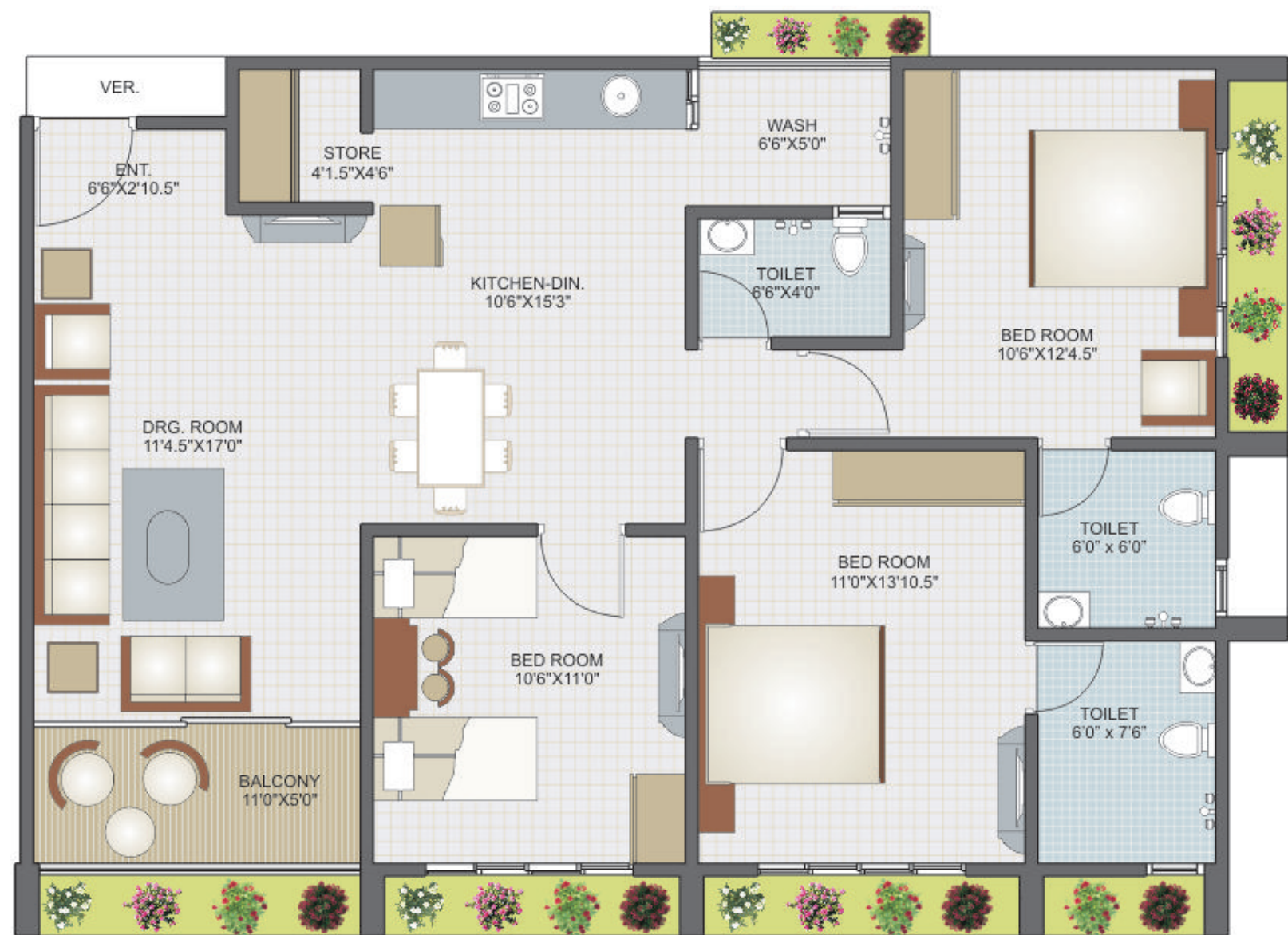


# TYPICAL FLOOR LAYOUT PLAN



# BLOCK - A

## UNIT FLOOR PLAN



# BLOCK - A

## SECTION PLAN



# BLOCK - B

## UNIT FLOOR PLAN



# BLOCK - C

## UNIT FLOOR PLAN





**DISCLAIMER :**

• Any amendments in Rules & Regulation By Any Authority will be bound to all member. • All expenses of legal document, Torrent Power, Extra Stamp Duty (if any), Service tax VAT (if applicable), Society Maintenance, AMC Tax will be Borne By Members. • External & Internal changes shall not be allowed. • Before passion execution of sale deep is compulsory. • Members are bound to pay installments regularly & irregularity in payment may cause cancellation of booking. • Developer reserve right of any changes in the scheme & it shall be bound all member. • This booklet is only private circulation for general information to the member & shall not form a part of any agreement. • It can be changes without prior notice.



## SPECIFICATIONS:



### STRUCTURE

- Earthquake resistant structure
- R.C.C. frame structure with brick masonry wall.



### EXTERNAL & INTERNAL FINISHES

- Internal mala plaster with wall putty and external double coat sand face plaster and texture finish with 100% acrylic water proof paint.



### FLOORING

- Good quality Vitrified tiles in entire apartment.



### BATHROOM & PLUMBING

- Glazed tiles dedo full height & flooring.
- Concealed plumbing with reputed sanitary ware & C.P. Fittings.



### DOOR & WINDOWS

- Decorative main door with wooden frame, all other internal doors will be flush type with enamel paint, fully glazed powder coated aluminum section sliding windows with natural stone sill.



### KITCHEN

- Platform mirror polished granite with S.S. Sink. Ceramic tile dedo up to the lintel level on the walls above platform. D.P. Kota stone Shelves in the storeroom.



### ELECTRIFICATION

- 3 Phase concealed copper wiring with adequate numbers of points in all rooms. Branded modular switches. Provision for cable / telephone and internet points.



### TERRACE

- Open Terrace to be finished with china mosaic for heat reflection & water proofing



### WASH AREA

- Wash area with requisite electrical & Plumbing points.
- Kota stone flooring in wash area.

## AMENITIES



24 HOUR WATER SUPPLY



BASEMENT & GROUND ALLOTTED CAR PARKING



ROUND THE CLOCK SECURITY



CHILDREN PLAY AREA



SENIOR CITIZEN SITTING



GYM



INDOOR GAMES



POOL TABLE



LIBRARY